



For more information and
to view Frequently Asked Questions
Visit MyLFSLease.com/info
Call (800) 286-0653



YOUR Lease-End Guide

FOURTH EDITION

COMMITTED TO SERVING YOU.

From the moment you begin to
consider your lease-end options,
we are with you every step of the
way. Whatever option you choose,
we will help make the transition
easy and convenient.

We thank you for being a valued
Lexus Financial Services customer
and look forward to supporting
your future vehicle finance needs.



STEP ONE

RESEARCH

EXPLORE SOME OF YOUR OPTIONS

Lease a New Lexus

Ready to experience the thrill of driving a brand new Lexus? Here's what you should do to prepare:

- Explore new models online at [lexus.com](https://www.lexus.com)
- Schedule a test drive at your local dealership

Purchase Your Current Lexus

Perhaps you've built a special bond with your current Lexus and want to make it your own.

Here's what you need to do to put the wheels in motion:

- Call (800) 286-0653 or contact your originating dealership to determine your vehicle's payoff amount
- Visit [lexusfinancial.com](https://www.lexusfinancial.com) to review our financing and vehicle and payment protection options

Note: Leasing a new Lexus or financing the purchase of your current Lexus are on approved credit through your dealer and Lexus Financial Services. Not all applicants will qualify. Additional options are available. See your Lexus dealer for details.



STEP TWO

INSPECT

BECOME FAMILIAR WITH THE CONDITION OF YOUR VEHICLE

Get a Complimentary Vehicle Inspection

In preparation for lease-end, we recommend you take advantage of an optional inspection¹. If you have not yet scheduled an inspection, call (855) 90-MY-LFS to speak to an AutoVIN specialist or visit MyLFSLease.com/info to schedule an appointment online.

An inspection is:

- CONVENIENT - Inspectors can meet you at your home, work or other preferred location
- INFORMATIVE - Knowing the condition of your vehicle before the end of your lease allows you to make well-informed decisions
- THOROUGH - Detailed condition reports, itemizing any excess wear and use, are available shortly after inspection

Review Wear and Use Guidelines

Should you elect to return your Lexus, you may be charged if there is damage exceeding normal wear and use². To better understand what is considered excessive, review our Wear and Use Guidelines at the end of this brochure or visit MyLFSLease.com/info for more information.

¹ Excess wear and use charges may be based solely on the optional inspection prior to maturity. Should you not take advantage of such inspection, one will be ordered upon return of the vehicle. If repairs are made to your vehicle before turn-in, you or the dealer may request an inspection upon turn-in.

² Under certain circumstances, Lexus Financial Services does not charge its lease customers for excess wear and use damage. All charges may be subject to sales tax.



STEP THREE

FINALIZE

RC

CARRY OUT YOUR NEXT STEPS

If You Lease a New Lexus:

- Visit your originating Lexus dealer to make any desired repairs
- Schedule an appointment with your originating dealer to turn in your Lexus
- Return your Lexus at the appointed time
- Pay any remaining amounts owed under your lease

If You Purchase Your Current Lexus:

To Finance Your Lexus

- Contact your originating dealer and arrange for financing through the dealer and Lexus Financial Services

To Purchase Your Lexus Outright

- Call us at (800) 286-0653 to obtain current payoff amount, mailing address and necessary sale documents
- Mail payment and necessary documentation

Note: Options are available on approved credit through your dealer and Lexus Financial Services for qualified applicants. Additional options are available. See your Lexus dealer for details.

INTERIOR

Excessive Wear and Use Examples³

Seat and Trim

- A single cut, tear, burn or stain greater than the size of a credit card

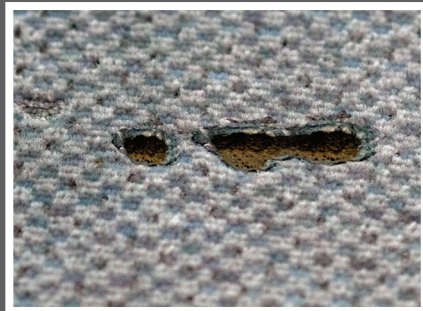
Equipment, Parts and Accessories

- Missing keys/remotes
- Missing parts or accessories (shifter knobs, head rests, tonneau/cargo cover, etc.)
- Inoperative, malfunctioning or broken parts or equipment
- Any modifications not on the vehicle at lease inception

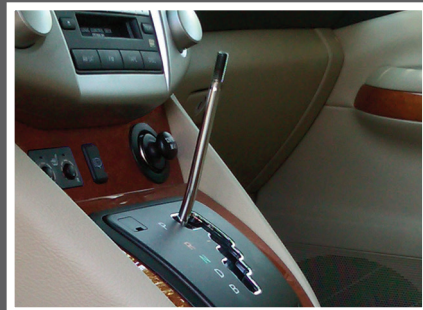
Tear



Burn



Missing Accessory



Broken Equipment



³ This is intended as general guidance only. State law and the terms of your lease may vary your rights and obligations regarding excess wear and use and mileage. Please refer to your lease agreement for a description of your rights and obligations upon termination of your lease. Lexus Financial Services may change its wear and use standards at any time consistent with the terms of your lease agreement.

EXTERIOR

Excessive Wear and Use Examples³

Tires, Wheels and Wheel Covers

- Tires with exposed cords or sidewall damage
- Tires or wheels that do not meet manufacturer's guidelines for safe operation
- Missing or damaged wheel covers
- Wheel gouges greater than 1"

Glass and Lights

- Windshield cracks, stars or bull's-eyes
- Damaged, broken or non-factory tinted glass
- Bent, broken or missing lights, turn signals, mirrors or lamps

Use the measuring tools provided on the last page to check for any excess wear and use damage

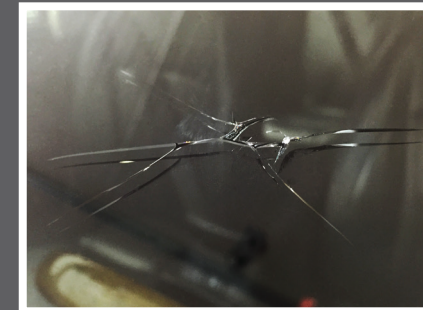
Exposed Tire Cord



Gouged Alloy Wheel



Damaged Windshield



Broken Light



EXTERIOR

Excessive Wear and Use Examples³

Paint and Body

- A consolidation of severe scratches in which the paint has been removed and the underlying panel is exposed
- A single dent greater than the size of a credit card
- Previous repairs performed poorly or unrepaired collision damage

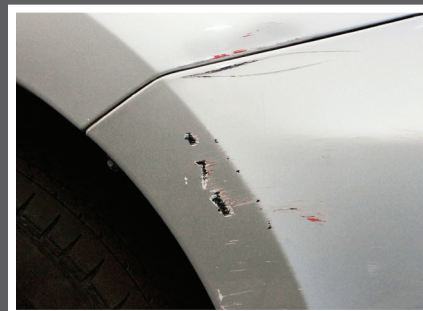
Scratched Panel



Scratched Bumper



Chipped Paint



Dented Bumper



³ This is intended as general guidance only. State law and the terms of your lease may vary your rights and obligations regarding excess wear and use and mileage. Please refer to your lease agreement for a description of your rights and obligations upon termination of your lease. Lexus Financial Services may change its wear and use standards at any time consistent with the terms of your lease agreement.

0" 1" 2" 3" 4" 5" 6"

Lease-Return Checklist and Measuring Tools

Use a credit card
as a guide to check
for excess wear
and use damage.

A credit card is 3 3/8" in length

Use this checklist to help ensure your lease turn-in process is fast and simple.

- Use the measuring tools to examine any possible wear and use on your vehicle.
- Schedule your vehicle inspection appointment prior to lease-end date.
- Schedule a turn-in appointment with your Lexus dealer.
- Bring the following materials with you to your pre-inspection and lease-return appointments:
 - All sets of keys (masters, remotes and valet), if applicable
 - Owner's Manuals Tool kit and spare tire, if applicable
 - Any original equipment on your vehicle at lease inception (radio, headrests, 3rd row seat, tonneau/cargo cover, etc.)
- Bring the Odometer Statement included in your final billing statement (also available on MyLFSLease.com), and have the dealer record the mileage. Don't forget to sign the statement and ask for a copy.
- Check with your DMV to determine if your state requires license plate return at lease end.
- Cancel any electronic payments.